

# LIVE DREAM PLAN

## DISCLAIMER :

This is not intended to be an all-inclusive list of policies and procedures of our Company, however it is a guide to help answer the most commonly asked questions and sets forth the guidelines under which the Company operates. The Company reserves the right to change any terms or provisions at any time. Please do refer our Company Policies, procedures in effect or as ammended time to time and comply with applicable laws, regulations and policies wherever you operate.





**A company led by products  
Products promoted by people & loved by planet.**





## OUR PRODUCT CERTIFICATIONS







#### OUR PRODUCT'S CERTIFICATIONS



Manufactured in **HACCP** & **USFDA** Registered Facility





#### OUR PRODUCT CERTIFICATIONS



Manufactured in **HACCP** & **USFDA** Registered Facility



# Herbs & Hills

The Anatomy Of Organic Skincare



## OUR PRODUCT CERTIFICATIONS









# rjuv9<sup>TM</sup>







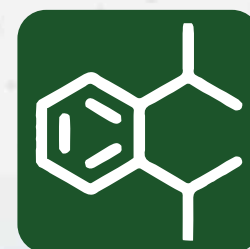
**10X  
BETTER**  
CLEANING AND GERM PROTECTION  
**WISH CLEAN HOME,  
HEALTHY HOME**



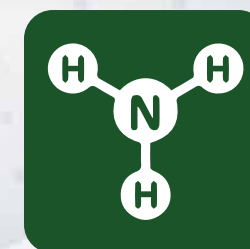
Phosphates Free



Chlorine Free



Phthalates Free



Ammonia Free





**GROWTH  
PROMOTER**

100%  
ORGANIC

NET CONTENT  
500ml

**AWS**

ACTIVATOR WETTER SPREADER

100%  
ORGANIC

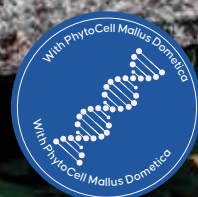
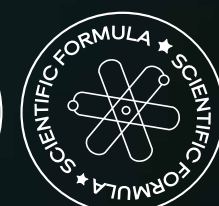
NET CONTENT  
500ml

**DESCRIPTION**

It is a high-concentrated natural  
activator, pH balancer and water  
hardness reducer which increases the  
efficiency of sprayed solution. It gives good  
wetting, absorption and also  
penetration of solution into the  
vegetation in any season, reducing the  
loss of water, nutrients and pesticides.  
It is a natural product and safe for  
human, animals and the environment.  
It is a natural product and safe for  
human, animals and the environment.  
It is a natural product and safe for  
human, animals and the environment.



# It's time for a new Transformation!



## Straight way from Switzerland

Derived from 'Uttwiler SpAtlauber', a rare Swiss apple variety, the innovative new ingredient PhytoCellTec™ Malus Domestica helps to give your skin cells a healthy, active & lasting life! It is a patented liposomal preparation of apple stem cells that are rich in epigenetic factors and metabolites for a revolutionary anti-ageing performance. PhytoCellTec™ Malus Domestica Extract



# ROOTIN<sup>TM</sup>



## OUR PRODUCT CERTIFICATIONS



Manufactured in **USFDA** Facility



# Introduction

A person can register as an esteemed customer of Darjuv9 Enterprises by submitting his/her KYC details as per the law of the land and get products at the discounted price for his consumption. Darjuv9's Live Dream Plan offers a great income potential which is solely based on the sale of high quality products offered by the company. DIBA (Darjuv9 Independent Business Associate) are entitled to earn compensation on the sale of the products by themselves and their organization, in-line with the terms and conditions clearly stated in Darjuv9 Live Dream Plan. Please note that the compensation is solely linked to the sales volume of the products and not on the recruitment of new people. However, sponsoring new associates is an integral part of the business.





# Client Creation Income

## Client Creation Income

### Earn 5%–30% Retail Profit

Independent distributors has the privilege of earning 5%-30% Retail selling profit of Darjuv9 products to the consumers through various channels such as a person, agents, websites or social media sites.





# Consumer Club Bonus

If a distributor does a self purchase of 500 B.V. and above consecutively for two months, he/she is entitled for consumer club bonus from next month onwards.

## 6% of Company BV Turnover

- 1 consumer club point = 500 B.V. self purchase during a business month and so on.
- For Example :  
1000 B.V. = 2 Points  
1500 B.V. = 3 Points and so on.

1 consumer club point value = 6% of company B.V. turnover/ Total number of points collected in the same month.

Consumer club bonus = consumer club points collected × consumer club point value.

Once after qualification, a person is entitle to take this bonus until he breaks the consecutive purchase for 3 Months.





# Retailer Club Bonus

If a distributor does a self purchase of 2500 B.V. and above consecutively for two months he/she is entitled for Retailer club bonus from next month onwards.

## 4% of Company B.V. Turnover

- 1 retailer club point = 2500 B.V. self purchase during a business month
- For Example :  
2500 B.V. = 1 Points  
5000 B.V. = 2 Points and so on.

1 retailer club point value = 4% of company B.V. turnover/ Total number of points collected in the same month.

Retailer club bonus = Retailer club points collected × Retailer club point value.

Once after qualification, a person is entitle to take this bonus until he breaks the consecutive purchase for 3 Months.





# Introductory Bill Bonus

**Start Well..  
Get Well..**

---

## 90% of Introductory Bill Turnover

Introductory Bill Bonus is a bonus for ongoing Darjuv9 entrepreneurs who works passionately to build teams and who receive 1 point of Introductory Bill Bonus in line with the matching of 2500:2500 B.V.'s (from “first billing “ or “introductory billing” of downline.

- Under this bonus, a total of 200 points is the maximum threshold for the income; i.e. further divided to a max of 50 points in duration of (1–7th; 7-14th; 14-21st; and 21st to end of the month).
- If a distributor makes a purchase of 1250 B.V. & above in his first bill or Introductory Bill then total threshold can be of 300 points, which will be further divided to a max of 75 points in duration of (1–7th; 7-14th; 14-21st; and 21st to end of the month).
- Introductory Bill Bonus Point = 2500:2500 B.V.'s  
Introductory Bill Bonus Point value = 90% of Company's B.V. occurring out of introductory bill ÷ Total number of IBP collected in a business month.
- Introductory Bill Bonus = Introductory Bill Bonus Point Value x Introductory Bill Bonus Points collected.
- Introductory Bill Bonus also offers an accumulation of B.V's of introductory billing to make it more rewarding. B.V's in stronger organization is carry forwarded to a maximum of 50,000 B.V.'s and in weaker organization till we get paid a minimum of 2 I.B.P's.





# Performance Bonus

## Match B.V... Catch Bonus

### 30% of Company B.V. Turnover\*

Performance bonus is like a start up bonus for ongoing Darjuv9 entrepreneurs who receive 1 point of performance bonus in line with the matching of 2500 B.V. : 2500 B.V. on monthly basis. Under this fund bonus, maximum 30 bonus points can be collected in a month. After maintaining 30 bonus points atleast for 2 consecutive months. This bonus threshold maximizes upto 75 bonus points.

- 1 Performance Bonus Point = 2500 B.V. : 2500 B.V.

1 Performance Bonus Point value = 30% of company in a business month/Total number of PBP collected in a business month.

- Performance Bonus = Performance bonus point value × Performance bonus points collected.

\*All B.V.'S except B.V. of introductory bill/first bill of your team.





Speed Up...  
Enjoy Life...

---

10% of Company  
B.V.\* Turnover

- 12500 B.V. : 12500 B.V. = 1 point value and it increases in the same multiple.
- To qualify two wheeler funds, the independent distributor needs to complete 12500 matching B.V. in a month. Under this fund bonus maximum 20 points can be collected in a month. After maintaining 20 bonus points for atleast 2 consecutive months, this bonus threshold maximizes upto 50 bonus points. and when we do 50 bonus points consecutively for 3 months, then threshold maximizes upto 100 bonus points.
- 1 Point value = 10% of company B.V. turnover / Total numbers of TWF collected in a month.
- Two wheeler fund bonus = Total number of points received × fund point value.

\*All B.V.'S except B.V. of introductory bill/first bill of your team.

\*The BV's of the First Bill shall not be considered in the calculation of this fund.





## Work Around... Enjoy Together

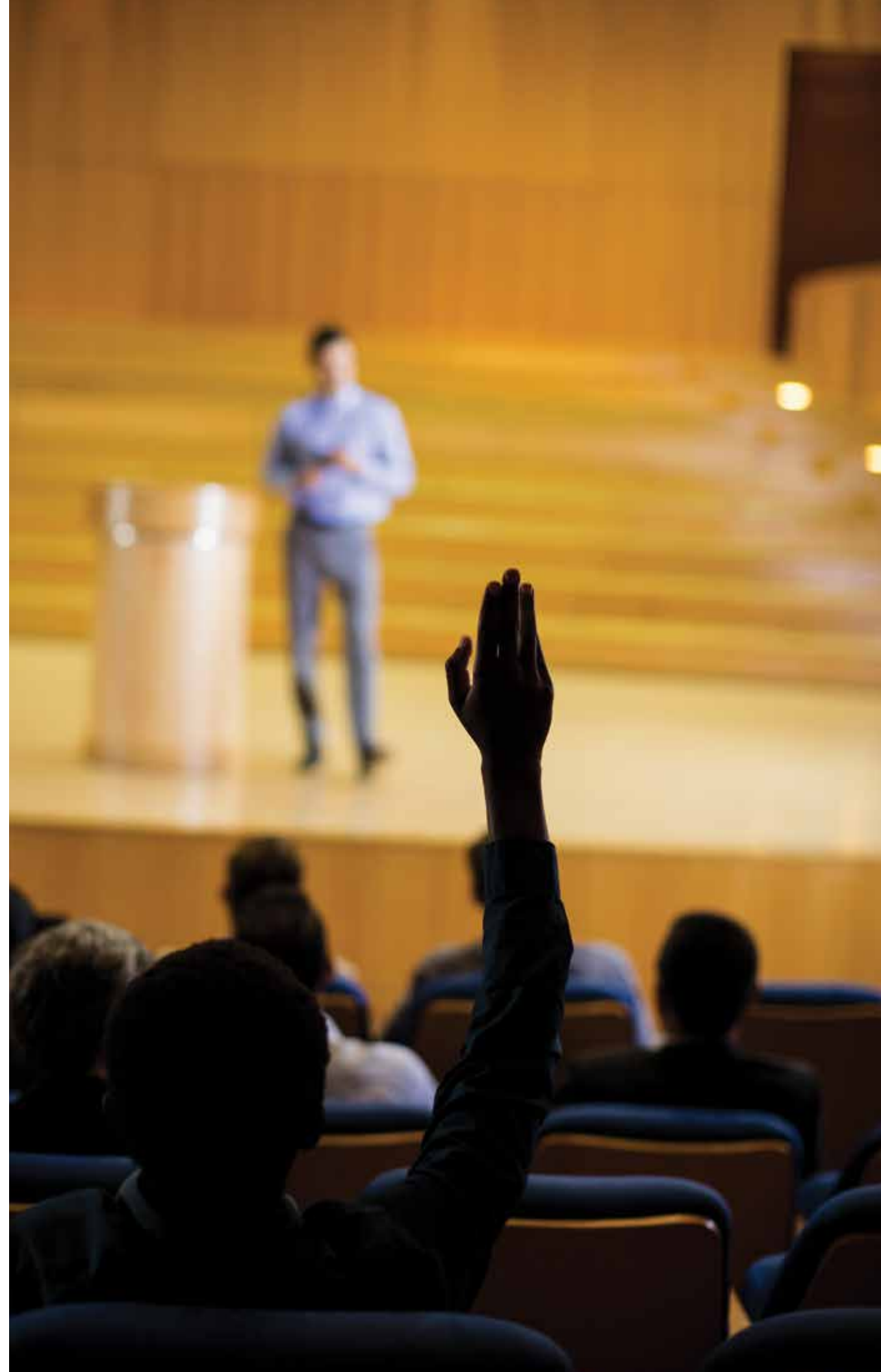
---

### 2% of Company B.V.\* Turnover

- To qualify Training support fund, the independent distributor needs to complete 12500 matching B.V. in a calendar month. This fund is completely dedicated to the individuals who qualifies the Training support fund only.
- 1 point value = 2% of company B.V. turnover / Total numbers of DTF points collected in a month.

\*All B.V.'S except B.V. of introductory bill/first bill of your team.

\*The BV's of the First Bill shall not be considered in the calculation of this fund.





## Feel Pride & Fly High...

---

### 10% of Company B.V.\* Turnover

- 25000 B.V. : 25000 B.V. = 1 point and its increase in the same multiple.
- To qualify for four wheeler fund, the independent distributor needs to complete 25000 matching B.V. in a month. Under this fund bonus, maximum 20 bonus points can be collected in a month. After maintaining 20 bonus points atleast for 2 consecutive months, this bonus threshold maximizes upto 50 bonus points and when we do 50 bonus points consecutively for 2 months, then threshold maximizes upto 100 bonus points.
- 1 point value = 10% of company B.V. Turnover/Total numbers of FWF collected in a month.
- Four wheeler fund =  
Total number of bonus points received x fund point value.

\*All B.V.'S except B.V. of introductory bill/first bill of your team.

\*The BV's of the First Bill shall not be considered in the calculation of this fund.





# RTP (Residential Training Program) Fund

## Gain Fame & Experience Leisure

---

### 2% of Company B.V.\* Turnover

- To qualify International travel fund, the independent distributor needs to complete 25000 matching B.V. in a calendar month. This fund is completely dedicated to the individuals who qualifies the RTP fund only.
- 1 point value = 2% of company B.V. turnover / Total numbers of ITF points collected in a month.
- This fund shall not be released in the first qualifying month. It shall only be released when after qualifying you attends the training organised by the company at the head office or any such place as decided and intimated by the Management.

\*All B.V.'S except B.V. of introductory bill/first bill of your team.





**Take ownership &  
Meet your dreams...**

---

## **10% of Company B.V.\* Turnover**

- 50000 B.V. : 50000 B.V. = 1 point and it increases in the same multiple.
- To qualify for the house fund, The Independent distributor needs to complete 50000 matching B.V. in a month. Under this fund bonus, maximum 20 points can be collected in a month. After maintaining 20 bonus points atleast for 2 consecutive months, this bonus threshold maximizes upto 50 bonus points and after maintaining 50 bonus points atleast for 2 consecutive months ; this bonus threshold maximizes upto 100 bonus points.
- 1 point value = 10% of company B.V. turnover/Total numbers of house fund points collected in a month.  
House fund = Total numbers of bonus points received × Fund point value.

\*All B.V.'S except B.V. of introductory bill/first bill of your team.

\*The BV's of the First Bill shall not be considered in the calculation of this fund.





# Luxury Domestic Trip

## Lead the business... Excel the Country

---

### 1% of Company B.V.\* Turnover

- For availing this trip a distributor is required to match 2 Lac:2 Lac BV in Six (6) out of seven (7) months in a financial year.

\*All B.V.'S except B.V. of introductory bill/first bill of your team.

\*The BV's of the First Bill shall not be considered in the calculation of this fund.





# Luxury International Trip

**Feel Precision  
Enjoy Prosperity**

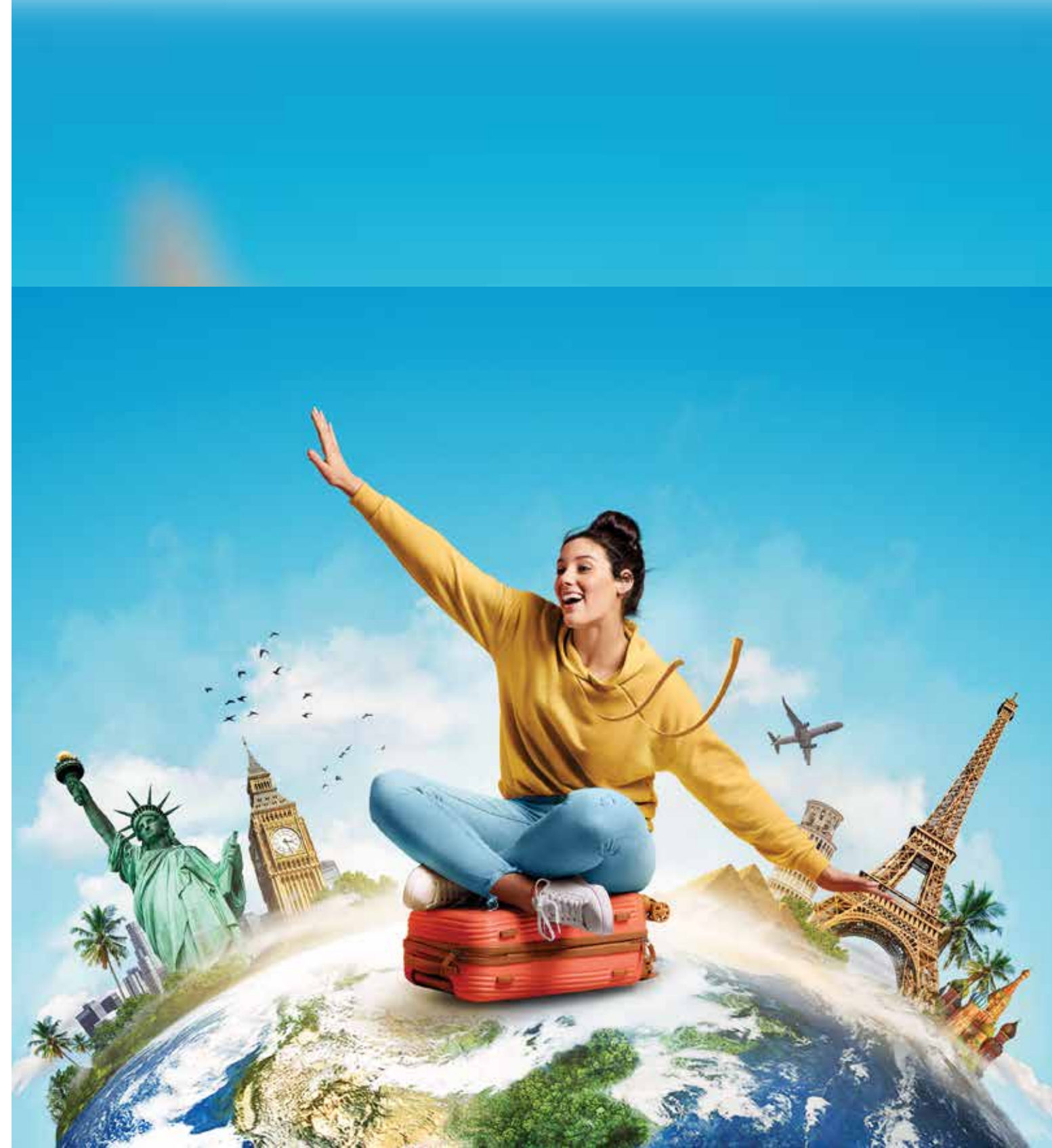
---

**1% of the  
Company Turnover\***

- For availing this trip a distributor is required to match 4 Lac:4 Lac BV in Six (6) out of seven (7) months in a financial year.

\*All B.V.'S except B.V. of introductory bill/first bill of your team.

\*The BV's of the First Bill shall not be considered in the calculation of this fund.





# Leadership Bonus

## Lead the business... Excel the World

---

### 10% of Company B.V.\* Turnover

- 2,00,000 B.V. : 2,00,000 B.V. = 1 Leadership Bonus Point and it increases in the same multiple
- To qualify for this leadership fund, the independent distributor needs to complete 2,00,000 matching B.V. consecutively for 2 Months. This bonus threshold maximizes upto 50 bonus points.
- If a person consistently achieves 50 bonus points for two months then the bonus threshold gets upgraded to 100 bonus points.
- 1 Point Value = 10% of company B.V. Turnover/Total Number of leadership points collected in a month.
- Leadership Bonus = Total no. of bonus points received x Leadership bonus point value.

\*All B.V.'S except B.V. of introductory bill/first bill of your team.

\*The BV's of the First Bill shall not be considered in the calculation of this fund.





# President Club Bonus

## Feel Precision Enjoy Prosperity

---

### 4% of the Company Turnover\*

- Darjuv9 Success Program rewards president club bonus to the key performers whose contribution is instrumental to the business growth and are considered as an valuable asset to the company.
- 25,00,000 B.V. : 25,00,000 B.V. = 1 President Club Bonus Point and it increases in the same multiple.
- 1 Point Value = 4% of the company monthly B.V. Turnover/Total Number of president club bonus points collected in a month.
- President club bonus : Total number of the bonus points recieved x President club bonus value.
- If one gets qualified in any month, he shall receive the bonus whenever he/she qualifies next.

\*All B.V.'S except B.V. of introductory bill/first bill of your team.

\*The BV's of the First Bill shall not be considered in the calculation of this fund.





# Mentorship Bonus

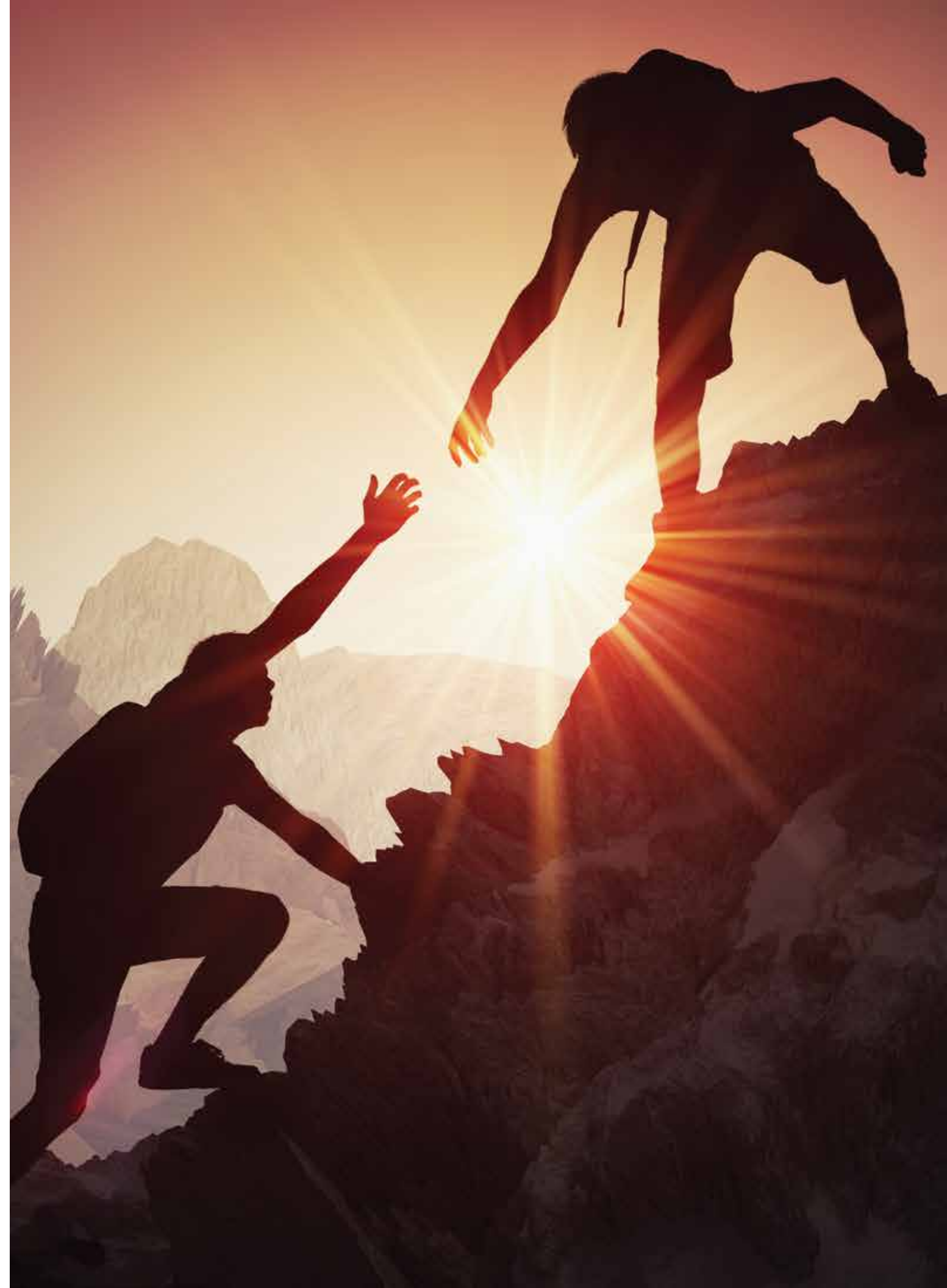
## Help others... To help yourself

10% of the sponsor line earning (6% of 1st Generation Earning + 4% of second generation earning)

To qualify for Mentorship Fund, one should have minimum matching of 12500 : 12500 B.V.

- Mentorship bonus is based upon the income earned by any distributor's first generation and the second generation sponsorline. Whereas, first generation is considered to be that distributor which has minimum qualification for TWF and similarly is the second generation.
- Mentorship Bonus is equal to 6% of income from first dynamic generation which includes income from (Performance Bonus + Two Wheeler Bonus + Four Wheeler + House Fund + President Club Bonus + Luxury Domestic Trip+ Luxury International Trip + Leadership Bonus + President Club Bonus )
- Additionally the same distributor gets the mentorship bonus equal to 4% of the payout generated through the same income heads (as mentioned above) earned from his/her second generation.

\*The BV's of the First Bill shall not be considered in the calculation of this fund.





## Cross Sponsoring

Company does not allow cross sponsoring. All the below mentioned acts will come under the preview of cross sponsoring.

- Sponsoring up an existing distributor from another group.
- Signing up the spouse when the husband is already a distributor and vice versa.
- Signing up under another sponsor without resigning from the earlier distributorship.
- Allowing someone else to use his or her distributorship to do business.
- If a unmarried son /daughter signs up under some other line of sponsorship than his/ her family and vice versa.

In this case the new distributorship id will be terminated.

## Course of action if cross sponsoring comes to the notice

- If cross sponsoring comes to notice within six months the new distributorship will be cancelled and the network under the new distributorship will be shifted to next line of sponsor.
- Where cross sponsoring comes to notice after six months then in such cases company will decide from which distributorship needs to be cancelled. The network under the cancelled distributorship will be shifted to the next higher distributor in the line of sponsorship.

If during the investigation it comes to light that one of the distributorship has been registered unethically without the consent of the distributor in all such cases distributorship placed unethically will be cancelled and any network under that distributorship Id will be shifted to next line of sponsorship. Company will also take strict action against distributor involved in the unethical sponsoring. Company reserves that right to take any action that it deems fit and the decision of the company will be considered final.



## Expiry/Cancellation/ Resignation/Succession of Distributorship

Any distributor who wishes to resign from his distributorship can do so by submitting an application. Receipt of acknowledgement of any such communication marks resignation of the distributorship. A distributor who has resigned can re register under any distributor after 180 days from the date on which his resignation came into effect. No claim with regard to previously build network will be entertained.

In case of death of a distributor the business will be transferred to the nominee or the guardian where the nominee is still a minor.





## RANKS CHRONOLOGY



**STAR**  
25000 : 25000 BV



**SILVER**  
50000 : 50000 BV



**GOLD**  
100000 : 100000 BV



**PLATINUM**  
200000 : 200000 BV



**RUBY**  
500000 : 500000 BV



**SAPPHIRE**  
1000000 : 1000000 BV



**EMERALD**  
2500000 : 2500000 BV



**DIAMOND**  
1 Emerald : 1 Emerald



**EXECUTIVE  
DIAMOND**  
1 Diamond : 1 Diamond



**VICE  
PRESIDENT**  
1 Executive Diamond : 1 Executive Diamond



**PRESIDENT**  
1 Vice President : 1 Vice President



# A COMPANY LED BY PRODUCTS

## OUR BRANDS



**DARJUV9 ENTERPRISES PVT. LTD.**

DARJUV9 TOWER 41/35, West Punjabi Bagh,  
New Delhi-110 026



**Customer Care No: 852 70 80 040**



**customercare@darjuv9.com**



**www.darjuv9.com** **darjuv9** **darjuv9**

